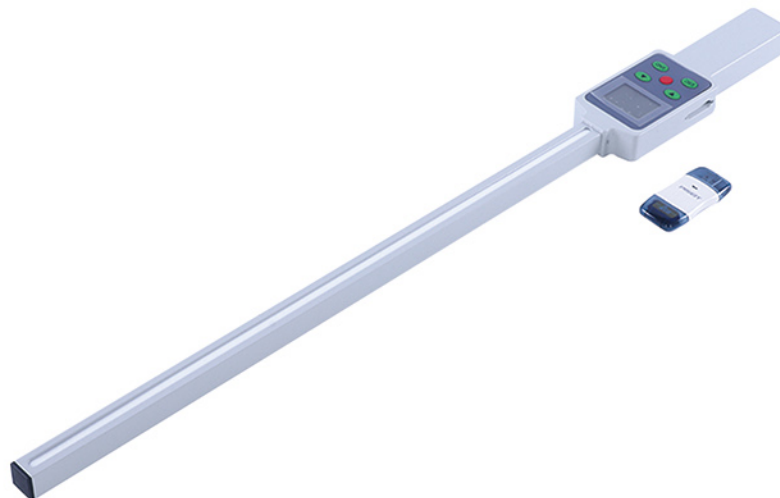


Plant Canopy Analyzer



Introduction:

Plant canopy analyzer is widely applied for farming production and agricultural research, canopy energy resource investigation, measure the light interception among plant canopy, and research the relation between plant growth and development, production quality and light utilization.

Features:

- * Integration design, it includes LCD, operation buttons, SD card plug and measure probe.
- * Menu operation is easy, small size and portable.
- * Large store capacity, convenient data management.
- * Low power dissipation with reasonable power management with automatically shut down and restarts action.
- * Manual and auto measure method are available.

Technical Parameters:

Model	PCA-1000
Measuring Range	0~2700 $\mu\text{mol m}^2/\text{s}$
Resolution	1 $\mu\text{mol m}^2/\text{s}$
Response Time	10 μs
Auto-Collecting Interval	1~99 min
Auto-Collecting Times	1~99 times
Store Capacity	2GB(SD card)
Meter Length	750mm
Probe Length	500mm
Qty of Sensors	25pcs(standard)
Power Supply	2*AA batteries
Working Temp	0~60 $^{\circ}\text{C}$
Working Humidity	100%RH
Package Size	810*210*160mm
Net/Gross Weight	2/3kg